

# BJK Farms

Brian and Jennifer Kreutner Farms



2026

*Private Treaty Bull Offering*

Registered Herefords

Vinton, IA

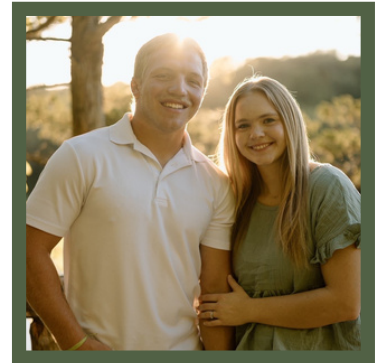
# ABOUT US

## *Greetings!*

Thank you for looking at the first edition of our annual catalog. We would like to thank all of our past customers for their business, and we hope that we will be able to continue to supply your needs. For our new customers, I would like to introduce you to our farm.

I (Brian) am proud to be the fifth generation in my family to farm in Benton County, Iowa. My wife, Jennifer, and I live on the farm where I grew up. My family raised purebred Hereford cattle, which my sisters and I showed at the county fair. After graduating from Iowa State, I worked for 12 years in the agricultural industry before my wife and I returned to the farm in 2004. It was around this time when my parents liquidated the herd and focused more on corn and soybeans prior to their retirement in 2004.

We have three grown children. Sarah and her husband live in Ames, IA, and have a son. Jonathon and his wife, Marianne, live in Monroe, IA. Our youngest daughter, Sophia, and her husband, Dahson, make their home in Davenport, IA. We primarily raise corn and soybeans, along with oats and hay, and have a 70-cow herd, consisting of 50 purebred Hereford cows. The calves we don't keep as replacements or sell as breeding stock are fed out, along with some additional feeder calves purchased, and are sold as locker beef to local customers. We sell approximately 50 head each year this way. This gives us a great understanding of what customers are looking for in the final product. We try very hard to have the best-tasting beef in the area.



## *Our Herd*

Starting with three purebred Hereford cows in 2007, we have worked hard to select and retain cattle that have docile temperaments, easy calving, and good growth and carcass characteristics. Our herd has grown to over 50 registered Hereford cows. For the last three out of four years, we have been selectively purchasing heifers and bred heifers that fit our program. Many of these females have come from Churchill Cattle Company in Manhattan, MT. We have also determined that the fastest way to improve our herd is by primarily using AI sires on our best cows, which allows us to choose from the best bulls in the United States. As you can see from this year's crop, we have the best bulls to select from with some of the best EPDs we have ever had.

# TERMS AND INFORMATION

## TERMS

All of our bulls this year will be sold via private treaty. After purchase, we can hold the bull at our farm until you are ready for delivery, or until June 1<sup>st</sup>.

## GUARANTEE

All of our bulls will be semen-tested and will have a breeding soundness exam completed by our local veterinarian sometime in April. We guarantee that they will breed for your first breeding season. If you have an issue with the bull, and he cannot perform properly, you may return him, and we will replace him with a bull of equal value, or we will credit your purchase value, less any salvage value you received on the bull. After the first breeding season, this guarantee is no longer in effect.

## DELIVERY

We offer free delivery within 100 miles of our farm in Vinton, IA. We will deliver farther for a negotiated price. If you are willing to pick up your bull(s), we will negotiate a small reduction in price.

## CONTACT US

Brian Kreutner 319-560-9797  
Jon Kreutner 319-560-7704  
Email [bjkfarms@live.com](mailto:bjkfarms@live.com)

## MORE INFORMATION

For pictures, videos, and more information, check out our website: [bjkfarms.com](http://bjkfarms.com)



## IOWA BEEF EXPO CONSIGNMENT:

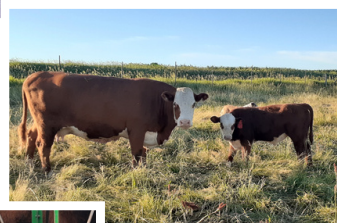
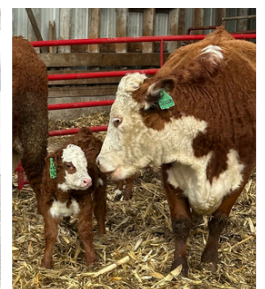
### BJK 9444G VALOR 513N

Polled | BD: 01-26-25 | P44691942

JDH VICTOR 719T 33Z ET  
RV VALOR 9444G ET  
RV BOBBI 1404

PCR X51 BENTLEY 454B  
BJK 454B BENTLY 121J  
KB DOM DIAMOND 223

CE	BW	WW	YW	SC	MM	UDDR	REA	MARB	BMI	CHB
10.2	0.7	56	89	0.6	7	1.50	0.63	0.14	397	13
8%	15%					2%				



# AI SIRES



## CMF 1720 GOLD RUSH 569G ET

Polled | BD: 11-27-19 | P44108010

KCF BENNETT ENCORE Z311 ET  
 NJW 79Z Z311 ENDURE 173D ET  
 BW 91H 100W RITA 79Z ET

EFBEEF RESOLUTE CEO  
 L III TFL C609 VICTORIA 1720  
 L IIIX651 RITA A045

CE	BW	WW	YW	SC	MM	UDDR	REA	MARB	BMI	CHB
9.2	1.1	68	102	0.7	25	1.50	0.73	0.75	606	219
10%	19%	9%	21%			2%	13%	1%	1%	1%



## BIRDWELL NEW STANDARD 2912 ET

Polled | BD: 03-11-22 | P44358760

KCF BENNETT TRUST B279 ET  
 KCF BENNETT RESOLVE G595  
 KCF MISS TESTED C422

EFBEEF BR VALIDATED B413  
 BR VALIDATED B413 6035 7098  
 BR BENNETT 4R Y428 2101 6035

CE	BW	WW	YW	SC	MM	UDDR	REA	MARB	BMI	CHB
7.0	1.0	65	87	1.7	34	1.50	1.44	0.93	558	216
21%	18%	16%		4%	11%	2%	1%	1%	1%	1%



## NJW 119E 87G ENDORSEMENT 216J

Polled | BD: 03-07-21 | P44272851

/S MANDATE 66589 ET  
 NJW 133A 6589 MANIFEST 87G ET  
 BW NJW 76S 8Y HOMESPUN 133A

NJW 76S 88X CIRCLEBOSS 164C ET  
 NJW 8B 164C LEXY 119E  
 NJW 149Z 10W LEXY 8B

CE	BW	WW	YW	SC	MM	UDDR	REA	MARB	BMI	CHB
15.5	-1.7	64	95	1.2	32	1.50	0.66	0.34	475	136
1%	3%	19%			18%	2%	20%	11%	8%	



## CHURCHILL MAJESTIC 903G ET

Polled | BD: 01-04-19 | P44044136

R LEADER 6964  
 BOYD 31Z BLUEPRINT 6153  
 NJW 91H 100W RITA 31Z ET

NJW 73S W18 HOMETOWN 10Y ET  
 H MS 0103 MARIAH 4437 ET  
 H W4 MARIAH 0103 ET

CE	BW	WW	YW	SC	MM	UDDR	REA	MARB	BMI	CHB
8.8	2.3	68	100	1.2	30	1.80	0.63	0.04	521	117
12%		9%	25%			1%	23%		3%	

# HEREFORD EPDS

## Calving Ease - Direct (CE)

CE EPD is based on calving ease scores and birth weights and is measured on a percentage. CE EPD indicates the influence of the sire on calving ease in females calving at 2 years of age. For example, if sire A has a CE EPD of 6 and sire B has a CE EPD of -2, then you would expect on average if comparably mated, sire A's calves would be born with an 8% more likely chance of being unassisted when compared to sire B's calves.

## Birth Weight (BW)

BW EPD is an indicator trait for calving ease and is measured in pounds. For example, if sire A has a BW EPD of 3.6 and sire B has a BW EPD of 0.6, then you would expect on average if comparably mated, sire A's calves would come 3 lb. heavier at birth when compared to sire B's calves. Larger BW EPDs usually, but not always, indicate more calving difficulty. The figure in parentheses found after each EPD is an accuracy value or reliability of the EPD.

## Weaning Weight (WW)

WW EPD is an estimate of pre-weaning growth that is measured in pounds. For example, if sire A has a WW EPD of 60 and sire B has a WW EPD of 40, then you would expect on average if comparably mated, sire A's calves would weigh 20 lb. heavier at weaning when compared to sire B's calves.

## Yearling Weight (YW)

YW EPD is an estimate of post-weaning growth that is measured in pounds. For example, if sire A has a YW EPD of 100 and sire B has a YW EPD of 70, then you would expect on average if comparably mated, sire A's calves would weigh 30 lb. heavier at a year of age when compared to sire B's calves.

## Maternal Milk (MM)

The milking ability of a sire's daughters is expressed in pounds of calf weaned. It predicts the difference in average weaning weights of sires' daughters' progeny due to milking ability. Daughters of the sire with a +14 MM EPD should produce progeny with 205-day weights averaging 24 lb. more (as a result of greater milk production) than daughters of a bull with a MM EPD of -10 lb. (14 minus -10.0 = 24 lb.). This difference in weaning weight is due to total milk production during the entire lactation.

## Udder Suspension (UDDR)

UDDR EPDs are reported on a 9 (very tight) to 1 (very pendulous) scoring scale. Differences in sire EPDs predict the difference expected in the sires' daughters' udder characteristics when managed in the same environment. For example, if sire A has a UDDR EPD of 0.4, and sire B has a UDDR EPD of -0.1, the difference in the values is 0.5, or one-half of a score. If daughters of sires A and B are raised and managed in the same environment, you would expect half a score better udder suspension in daughters of sire A, compared to sire B.

## Scrotal Circumference (SC)

Measured in centimeters and adjusted to 365 days of age, SC EPD is the best estimate of fertility. It is related to the bull's own semen quantity and quality, and is also associated with age at puberty of sons and daughters. Larger SC EPDs suggest younger age at puberty. Yearling sons of a sire with a .7 SC EPD should have yearling scrotal circumference measurements that average 0.7 centimeters (cm) larger than progeny by a bull with an EPD of 0.0 cm.

## Ribeye Area (REA)

REA EPDs reflect differences in an adjusted 365-day ribeye area measurement based on carcass measurements of harvested cattle. Sires with relatively higher REA EPDs are expected to produce better muscled and higher percentage yielding slaughter progeny than will sires with lower REA EPDs. Ultrasound measurements are also incorporated into this trait and have been shown to be highly correlated with the performance of slaughter progeny. All data is expressed on a carcass scale.

## Marbling (MARB)

MARB EPDs reflect differences in an adjusted 365-day marbling score (intramuscular fat, [IMF]) based on carcass measurements of harvested cattle. Breeding cattle with higher MARB EPDs should produce slaughter progeny with a higher degree of IMF and therefore higher quality grades. Ultrasound measurements are also incorporated into this trait and have been shown to be highly correlated with the performance of slaughter progeny. All data is expressed on a carcass scale.

## Baldie Maternal Index (BMI\$)

BMI\$ is a maternally focused index that has a production system based on 1,000-Hereford x Angus females with a progeny harvest endpoint directed toward Certified Hereford Beef (CHB®). This index is more critical of CE than the Brahman Influence Index (BII\$) and also has significant weight on fertility. There is positive weight on WW and a slightly negative weight on YW, which promotes early growth and then a slow down on growth to keep mature size manageable. The emphasis of IMF is greater than the emphasis of REA. This is true because of the price difference of the Choice-Select spread and the fact that there is very little incentive to produce cattle better than a Yield Grade 3. This index is geared to service any commercial program that has British-cross cows. Calving Ease Index

## Certified Hereford Beef Index (CHB\$)

This is a terminal sire index that is built on a production system where Hereford bulls sire calves for the CHB market. There is some pressure put on CE and then positive weight on both WW and YW. Remember that all offspring in this index are harvested, so they need to be born alive and then grow fast at all stages of life. Of course, we have much more emphasis on fat in this index, as we want the cattle to stay lean. There is also a significant weight on both REA and IMF with more emphasis again on IMF. This index would be used by producers who have a target of producing bulls for a terminal breeding program. It could be used heavily in the Midwest where bulls are used in rotational breeding programs to produce cattle in a retained ownership program or are simply sold to backgrounders. This is the only index that has no emphasis on fertility. Remember that nothing is retained in the herd.

We are showing some of the more commonly used EPDs and indexes for each animal. Here, we have offered the American Hereford Association (AHA) explanation of those EPDs. If you would like to see a bull's EPD that we do not show here, you can look it up online at [bjkfarms.com/epd-guide](http://bjkfarms.com/epd-guide), or ask us.

# YEARLING BULLS

All of our yearling bulls have been DNA tested and are free of all known genetic defects. Their EPDs are DNA enhanced, which provides more accuracy and reliability.

Trait	BJK Bull Avg.	Breed Avg.	BJK Advantage
CE	7.4	3.7	50%
BW	1.8	2.5	41%
WW	65	57	12%
YW	100	90	10%
SC	1.4	1.1	19%
MM	32	27	15%
UDDR	1.47	1.27	14%
REA	0.75	0.48	36%
MARB	0.44	0.15	66%
BMI\$	514	375	27%
CHB\$	171	125	27%

## 1 BJK 2912 NEW STANDARD 502N

Homo Polled | BD: 01-19-25 | P44700473

KCF BENNETT RESOLVE G595  
BIRDWELL NEW STANDARD 2912 ET  
BR VALIDATED B413 6035 7098

CHURCHILL MAJESTIC 903G ET  
CHURCHILL LADY 246K  
CHURCHILL LADY 0210H

CE	BW	WW	YW	SC	MM	UDDR	REA	MARB	BMI	CHB
8.9	1.1	66	89	1.3	34	1.70	1.04	0.63	622	189
12%	20%	17%		24%	13%	1%	2%	2%	1%	2%

This homozygous son of New Standard is special. His dam is a Majestic daughter that we purchased from the great Churchill Cattle Company, and she did not disappoint. This short-eared bull is long and deep with power to spare. To top it off, he has 16 EPDs in the top 25% of the breed, with 8 traits in the top 1-2%, including UDDR, TEAT, REA, MARB, BMI, BII, and CHB. He is heifer-safe and a great choice for producing superior replacement heifers and high-growth feeder cattle.



CHURCHILL LADY 246K AS A HEIFER - DAM OF LOT 1

## 2 BJK 569G GOLD RUSH 504N

Polled | BD: 01-20-25 | P44693383

NJW 79Z Z311 ENDURE 173D ET  
CMF 1720 GOLD RUSH 569G ET  
L III TFL C609 VICTORIA 1720

CL 1 DOMINO 776E 1ET  
CHURCHILL LADY 019H ET  
CHURCHILL LADY 5131C ET

CE	BW	WW	YW	SC	MM	UDDR	REA	MARB	BMI	CHB
3.4	1.8	62	106	1.1	32	1.40	0.59	0.54	544	182
			17%		21%	9%		3%	2%	3%

This polled Gold Rush son is out of, arguably, our best cow on the farm. She is out of the Cooper 776E bull and has produced some of our best cattle to date. A previous son sold at the Iowa Beef Expo two years ago, and one of her daughters is doing great things here on the farm. This bull is dark red to the ground, powerfully made, and extremely docile. At this point, we plan to keep him and sell him as a two year old at next year's Iowa Beef Expo.



CHURCHILL LADY 019H ET AS A BRED HEIFER - DAM OF LOT 2



BJK 858F BROADWAY 303LET MATERNAL SIBLING OF LOT 2

# YEARLING BULLS

## 3 BJK 216 ENDORSEMENT 542N

Polled | BD: 03-02-25 | P44696535

NJW 133A 6589 MANIFEST 87G ET  
 NJW 119E 87G ENDORSEMENT 216J  
 NJW 8B 164C LEXY 119E

C ETF WILDCAT 4248 ET  
 BJK 4248 WILDCAT 2019H ET  
 CHURCHILL LADY 287Z

CE	BW	WW	YW	SC	MM	UDDR	REA	MARB	BMI	CHB
7.9	1.6	75	121	1.2	37	1.30	1.07	0.40	423	194
17%		3%	3%		5%		1%	9%		2%

Take a second look at this Endorsement son. Who said you can't have calving ease and excellent growth in the same bull? This March yearling bull is in the top 17% of the breed for CE and top 3% for WW and YW. He is deep and thick in his kind with a square hip to go along with it.



## 4 BJK 903G MAJESTIC 514N

Polled | BD: 01-26-25 | P44694791

BOYD 31Z BLUEPRINT 6153  
 CHURCHILL MAJESTIC 903G ET  
 H MS 0103 MARIAH 4437ET

CHURCHILL JR IMPACT 823F ET  
 BJK 823F IMPACT 214K ET  
 ECR FLO LADY GEN 4414 ET

CE	BW	WW	YW	SC	MM	UDDR	REA	MARB	BMI	CHB
7.1	4.1	73	114	1.6	34	1.40	0.45	0.06	476	129
22%		5%	7%	7%	13%	9%			9%	

This is the only Majestic son we have to offer this year, and he does not disappoint. He is goggle-eyed, deep, thick, and square with a level top. He is built like a tank. His EPDs for WW and YW are both in the top 5% and 7% of the breed, respectively. He is a great option for producing baldie calves.



## 5 BJK 2912 NEW STANDARD 516N

Scurred | BD: 01-27-25 | P44706174

KCF BENNETT RESOLVE G595  
 BIRDWELL NEW STANDARD 2912ET  
 BR VALIDATED B413 6035 7098

CHURCHILL ROUGHNECK 0280H ET  
 BJK 0280H ROUGHNECK 326L  
 CHURCHILL LADY 1157J

CE	BW	WW	YW	SC	MM	UDDR	REA	MARB	BMI	CHB
2.0	2.3	67	97	1.7	37	1.50	1.02	0.56	486	171
		14%		5%	5%	2%	2%	3%	7%	5%

This goggle-eyed New Standard son is thick-chested and deeply made. His maternal and carcass EPDs are excellent, with UDDR, TEAT, REA, and MARB all in the top 3% of the breed. His granddam is a very powerful cow purchased from Churchill Cattle Co. and is one of the best-looking cows on the farm.



## 6 BJK 569G GOLD RUSH 521N

Homo Polled | BD: 01-31-25 | P44696489

NJW 79Z Z311 ENDURE 173D ET  
 CMF 1720 GOLD RUSH 569G ET  
 L III TFL C609 VICTORIA 1720

TH 523F 738C SLEEP ON 163H  
 BJK 163H SLEEP ON 328L  
 BJK DREAM GIRL 152J

CE	BW	WW	YW	SC	MM	UDDR	REA	MARB	BMI	CHB
11.1	-0.2	59	87	0.9	27	1.50	0.70	0.31	476	163
6%	8%					2%	18%	16%	9%	8%

This homozygous polled son of Gold Rush is an excellent choice for heifers, as he is in the top 6% of the breed for CE and top 8% for BW. He is deep-bodied, structurally correct, and moderately framed.



# YEARLING BULLS

## 7 BJK 569G GOLD RUSH 510N

Scurred | BD: 01-23-25 | P44696508

NJW 79Z Z311 ENDURE 173D ET  
 CMF 1720 GOLD RUSH 569G ET  
 L III TFL C609 VICTORIA 1720

UU SENSATION 4043  
 BJK 4043 SENSATION 813F  
 BJK MISS RIBSTONE 640

CE	BW	WW	YW	SC	MM	UDDR	REA	MARB	BMI	CHB
15.7	-0.4	58	92	1.2	27	1.50	0.16	0.55	536	167
1%	7%					2%		3%	2%	7%

If you're looking for a heifer-safe bull, he may be one of our best options. His CE EPD is in the top 1% of the breed, and his BW is in the top 7%. He is deep-made, with a level top and is very sound on his feet and legs. He will be a great choice to put on black cows.



## 8 BJK 2912 NEW STANDARD 508N

Homo Polled | BD: 01-22-25 | P44697619

KCF BENNETT RESOLVE G595  
 BIRDWELL NEW STANDARD 2912 ET  
 BR VALIDATED B413 6035 7098

CHURCHILL RED BARON 8300F ET  
 BJK 8300F RED BARON 210K  
 BJK 858F BROADWAY 2002H

CE	BW	WW	YW	SC	MM	UDDR	REA	MARB	BMI	CHB
11.3	0.0	63	96	2.3	27	1.60	1.17	0.55	517	189
6%	9%			1%		1%	1%	3%	3%	2%

This is another homozygous New Standard son worth looking at. He is goggle-eyed, with a powerful shoulder and wide base. His CE and BW EPDs are within the top 9% of the breed, making him an excellent heifer bull. He is another great option for producing superior replacement heifers or baldie calves for the feed yard.



## 9 BJK 569G GOLD RUSH 519N

Homo Polled | BD: 01-30-25 | P44696409

NJW 79Z Z311 ENDURE 173D ET  
 CMF 1720 GOLD RUSH 569G ET  
 L III TFL C609 VICTORIA 1720

GOLDEN OAK OUTCROSS 18U  
 BJK 18U GOLDEN OAK 204K  
 BJK 4043 SENSATION 729E

CE	BW	WW	YW	SC	MM	UDDR	REA	MARB	BMI	CHB
0.7	4.7	65	108	0.9	26	1.40	0.55	0.27	493	148
		20%	13%			9%		22%	6%	18%

This cherry-red, homozygous polled Gold Rush son is level-topped and thick-made. His growth EPDs are excellent, with WW and YW within the top 20% of the breed. He is a great choice for cows and for anyone looking to add extra pounds at weaning time.



## 10 BJK 569G GOLD RUSH 517N

Scurred | BD: 01-27-25 | P44696543

NJW 79Z Z311 ENDURE 173D ET  
 CMF 1720 GOLD RUSH 569G ET  
 L III TFL C609 VICTORIA 1720

BJK 4043 SENSATION 714E  
 BJK 4043 SENSATION 2036H  
 BJK DOM REVOLUTION 502

CE	BW	WW	YW	SC	MM	UDDR	REA	MARB	BMI	CHB
6.3	2.7	57	90	1.3	37	1.40	0.72	0.54	564	183
				24%	5%	9%	16%	3%	1%	3%

This Gold Rush son has caught my eye since the day he was born. He is goggle-eyed, long-bodied, and big-boned. He is heifer-safe and has excellent maternal and index EPDs. He would make an outstanding choice for producing baldie replacement heifers.



# 2-YEAR-OLD BULLS

We are excited to offer a great selection of two-year-old bulls this year. We apologize that we do not have current pictures or videos for these bulls at the time of this printing. Please check out our website ([bjkfarms.com](http://bjkfarms.com)) for updates.

## 11 BJK 133J RED THUNDER 401M

Polled | BD: 01-26-24 | P44606232

DM ALL AROUND 904G ET  
CHURCHILL RED THUNDER 133J ET  
BR VALIDATED B413 6035 7098

NJW LONG HAUL 36E ET  
CHURCHILL LADY 1157J  
CHURCHILL LADY 128Y

CE	BW	WW	YW	SC	MM	UDDR	REA	MARB	BMI	CHB
4.3	1.0	59	84	1.1	41	1.50	0.71	0.17	475	112
19%					2%	2%	17%		9%	

This bull is something special. We used him last year as a clean-up bull for several of our AI cows, and we're looking forward to the calves that he will produce. He is a Red Thunder son out of a Long Haul daughter that we purchased from Churchill Cattle Co. two years ago. He is extremely deep and wide, with a straight top and good structure to go with it. His EPDs are impressive, with 10 traits in the top 25% of the breed and 8 in the top 10%.



**BJK 133J RED THUNDER 401M AS A YEARLING**



**CHURCHILL RED THUNDER 133J ET - SIRE OF LOT 11**

## 12 BJK 216J ENDORSEMENT 403M

Polled | BD: 01-31-24 | P44606223

NJW 133A 6589 MANIFEST 87G ET  
NJW 119E 87G ENDORSEMENT 216J  
NJW 8B 164C LEXY 119E

GOLDEN OAK OUTCROSS 18U  
BJK 18U GOLDEN OAK 203K  
BJK MISS SENSATION 754E

CE	BW	WW	YW	SC	MM	UDDR	REA	MARB	BMI	CHB
16.2	-1.3	63	95	1.2	32	1.40	0.81	0.41	493	146
1%	4%	27%			21%	9%	9%	8%	5%	20%

This Endorsement son does a lot of things right. His dam is a young cow that we raised, and she looks to be one of our top producers. We leased him to a neighbor last year, who has a few purebred Hereford cows. His CE and BW EPDs are in the top 1% and 4%, respectively, in the breed. That said, his WW and YW are still in the top 40% - that's not easy to find. He's got a level top and square hip. He will be a great choice for both heifers and mature cows, looking to produce excellent replacement heifers or feeder calves.



**BJK 216J ENDORSEMENT 403M AS A YEARLING**



# 2-YEAR-OLD BULLS

## 13 BJK 858 BROADWAY 404M

Polled | BD: 01-31-24 | P44606233

SHF YORK 19H Y02

CL 1 DOMINO 215Z

CHURCHILL BROADWAY 858F

BJK 215Z CL1 DOM 2007H

CHURCHILL LADY 640D

BJK MISS RIBSTONE 708E

CE	BW	WW	YW	SC	MM	UDDR	REA	MARB	BMI	CHB
3.4	3.2	70	116	1.4	29	1.20	0.44	0.32	388	166
		8%	5%	17%				15%		7%

Every year, we retain at least one yearling bull in case one of our customers has a problem. This was the bull we kept back last year, but make no mistake - this Broadway son has the look. He is long-made, with a lot of depth to go with it. His growth and carcass EPDs are excellent, with his WW, YW, and CHB all in the top 8% of the breed. He will be a great choice for black cows looking to produce baldie feeder calves.



BJK 858 BROADWAY 404M AS A YEARLING



CHURCHILL BROADWAY 858F  
SIRE OF LOT 13

## 14 BJK 250K CL1 447M

Polled | BD: 03-09-24 | P44696393

CL 1 DOMINO 942G

LOEWEN GENESIS G16 ET

BJK 942G CL1 DOM 250K

CHURCHILL LADY 126J ET

ECR WF DREAM GIRL 6209

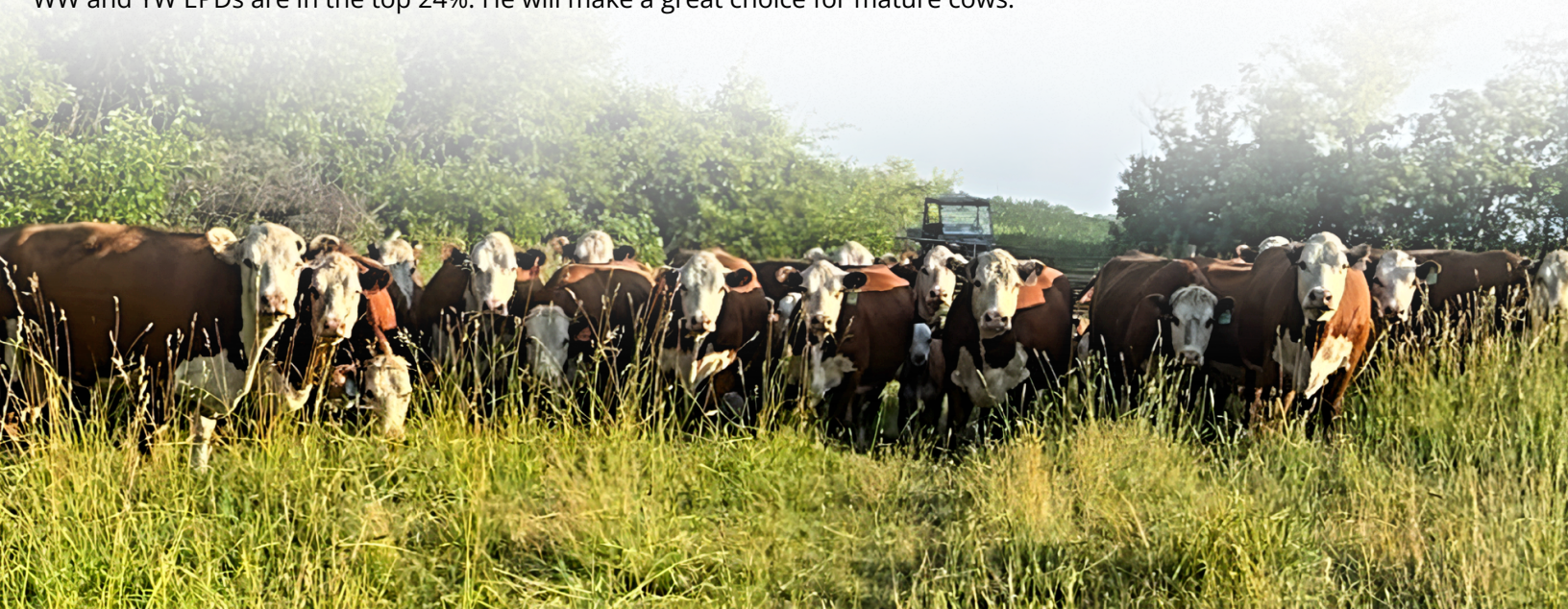
CHURCHILL LADY 929G ET

CE	BW	WW	YW	SC	MM	UDDR	REA	MARB	BMI	CHB
4.4	3.5	64	102	1.0	23	1.30	0.74	0.06	419	144
		23%	24%				14%			22%

This two-year old bull is a unique opportunity. He is the only natural-born calf out of a highly valued Loewen Genesis daughter purchased from Churchill Cattle Co. as a yearling. Unfortunately, she succumbed to an illness during the summer after this calf was born. Being a March calf and dealing with a sick mother, we decided to hold him back and not offer him for sale last year. He has really come along since then. He does a lot of things right, and his WW and YW EPDs are in the top 24%. He will make a great choice for mature cows.



CHURCHILL LADY 126J ET - DAM OF LOT 14





BJK Farms  
2296 63<sup>rd</sup> St.  
Vinton, IA 52349

